

Description and performance assessment of national programs of activation of people with disabilities and people 50 + . French experiences

Sylvain LEDUC

President of Federation of European Ergonomics Societies

Pr.of Ergonomics @ Aix-Marseille University

European Ergonomist ®

sylvain.leduc@univ-amu.fr

president@ergonomics-fees.eu

Presentation outline

Definitions

1



Data

2



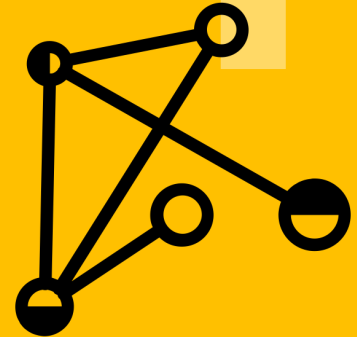
Approaches

3



Overview

4

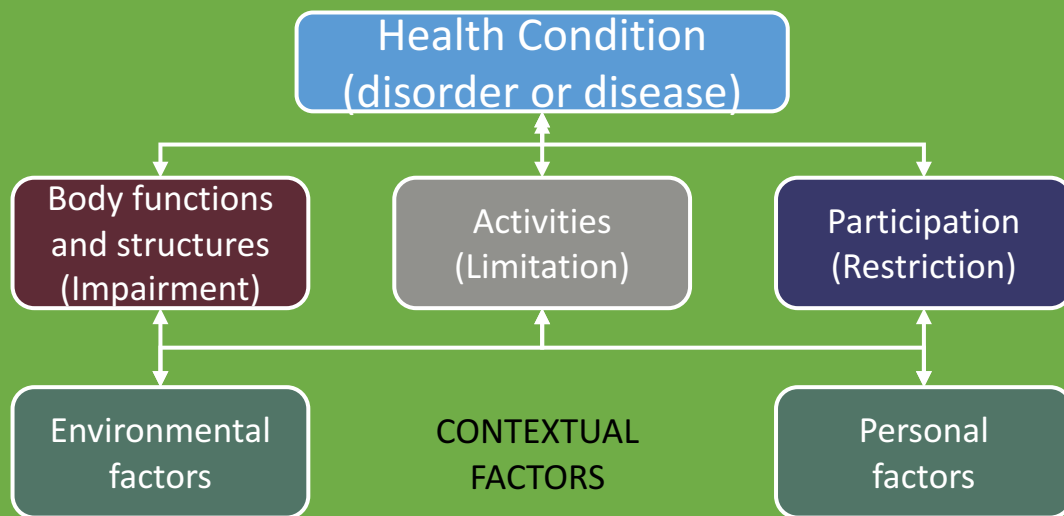




1.3 Million
aging
dependent
people



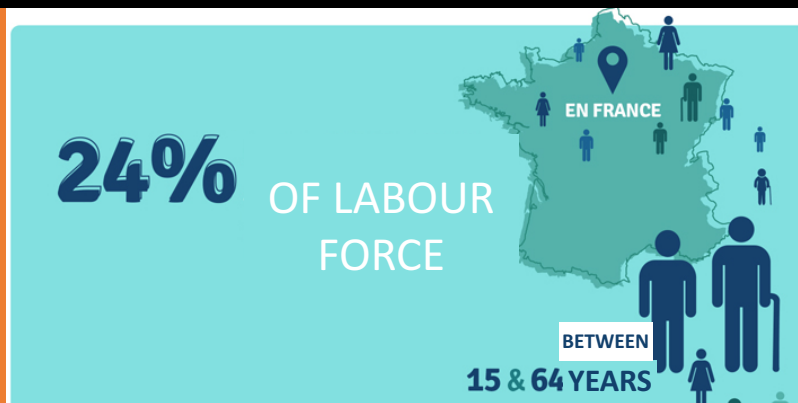
...support in everyday life, with a
view to permitting their integration
in society



DISABILITY = DISADVANTAGE



2



2

2,3 millions



5.8 %

13.2 %

5,2 millions



... OF LABOUR
FORCE IN FRANCE

1,7 millions



4.3 %

1.8 %

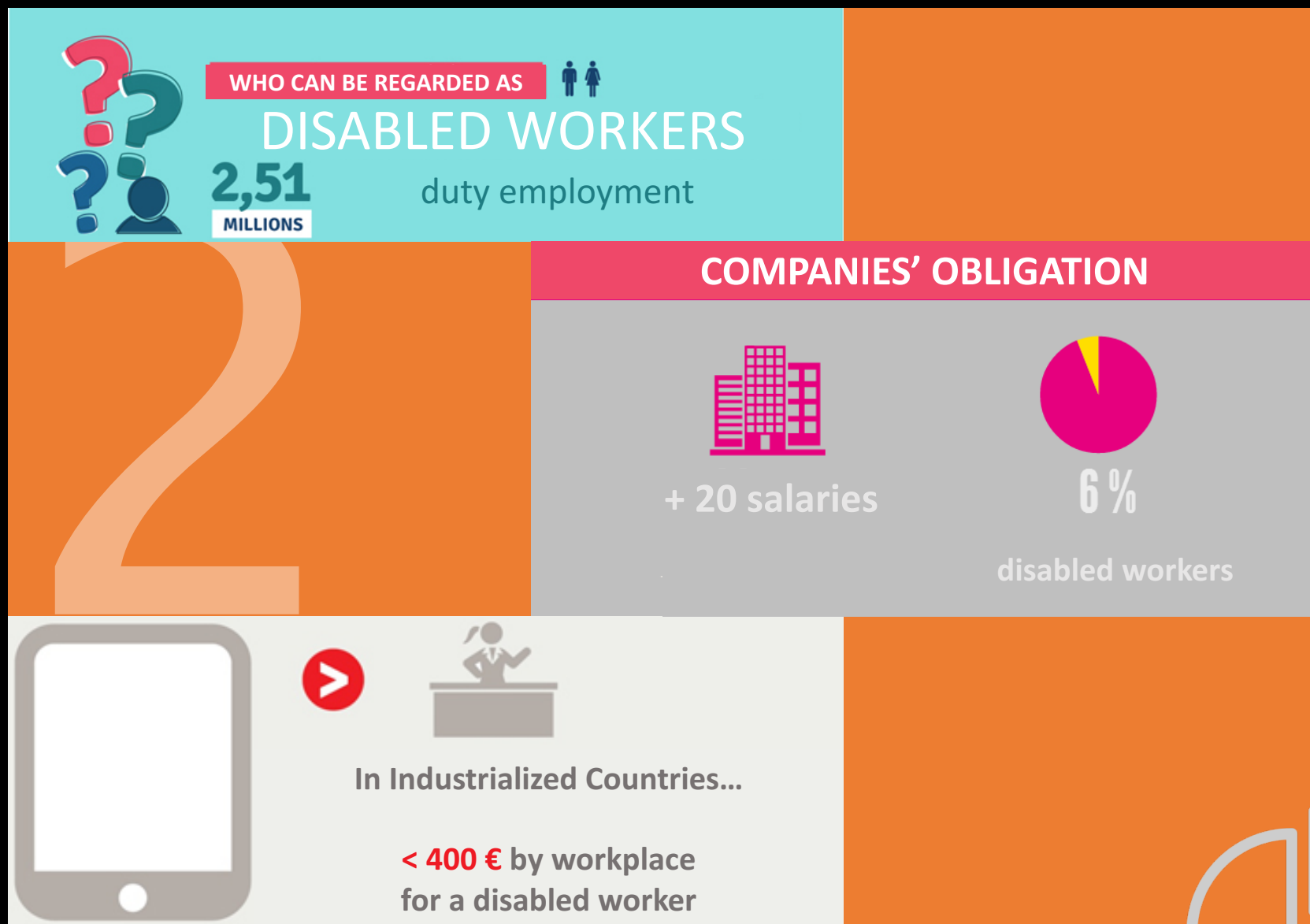
0,7 million

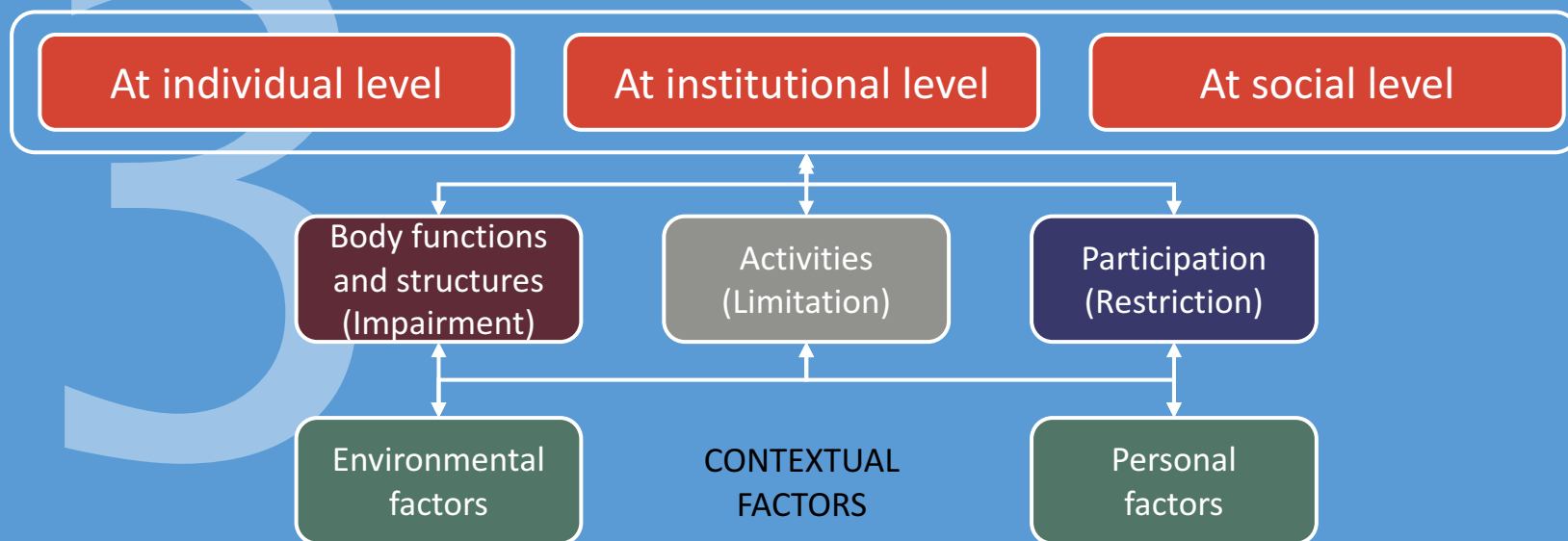


MULTIPLE DISABILITIES



POLYHANDICAP





At individual level

JOB RETENTION



Essential
Useful

Technical view
Work-place focused

Only disabled worker
Material ways

Stigmatization
No reconsideration

At institutional level

HOME HELP AIDES



Similar jobs as paramedics profession

Domestic working conditions
Lack of resources



2 consequences:
Versatile environments
Undedicated

Lone worker
Attractive job in a second part of professional career

At social level

CAPACITIVE
ENVIRONMENTS

Variability

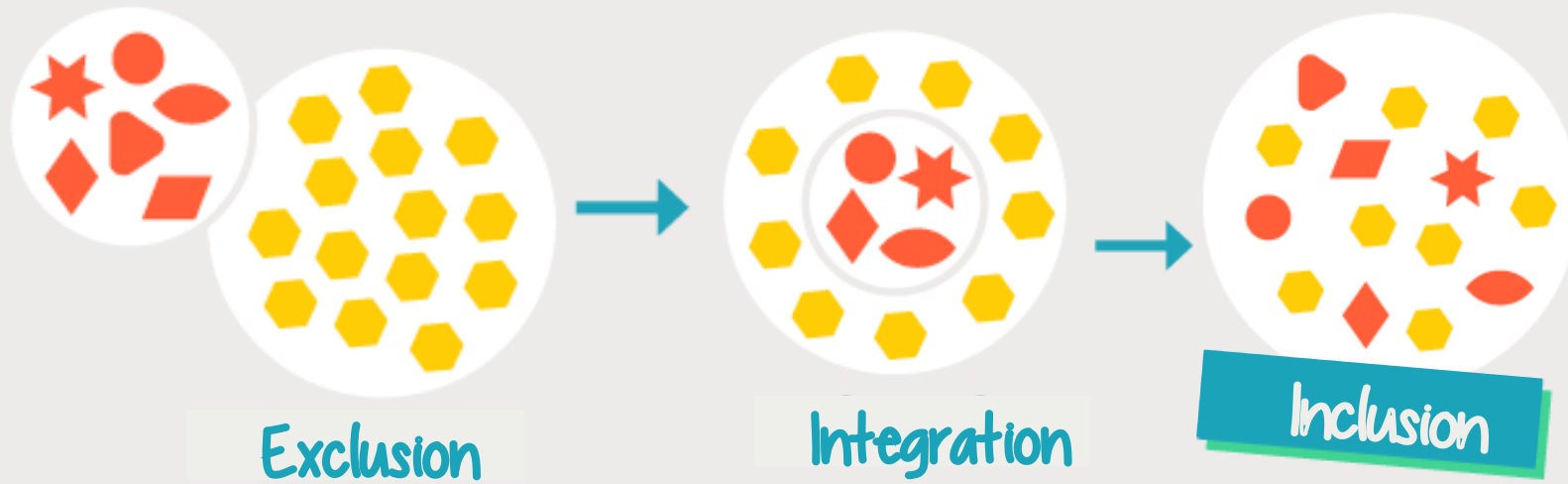
Reality

Holistic

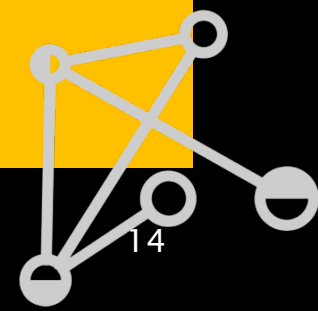




Towards a more inclusive society ?



11/21/17



ergonomic life design



International Ergonomics Association

Home

Text Size

A

A

A

What is Ergonomics? About IEA Resources News & Events IEA Awards [Internal Access](#)

Introduction

Council

Executive
Committee

Standing
Committees

Technical
Committees

Sustaining
Members

Ergonomics
human
centered
design

» [About IEA](#) » [Technical Committees](#) »

Ergonomics in Design for All (EinDfA)

Members



Chair

Arch. ISABELLA TIZIANA STEFFAN
Studio Steffan-Design and Research,
Milano
Email: info@studiosteffan.it



Co-Chair

Dr. and Emeritus Researcher of AIST KEN SAGAWA
AIST - National Institute of Advanced Industrial Science and Technology
Email: sagawa-k@aist.go.jp



Executive

Dr. ANDREW PETERSEN
WELL Australia, Queensland
Email: ajp.phd.jp@gmail.com

XVIII RESEARCH-TECHNICAL
INTERNATIONAL CONFERENCE:
ERGONOMICS FOR PEOPLE WITH
DISABILITIES - LODZ - POLAND

11/21/17

16

